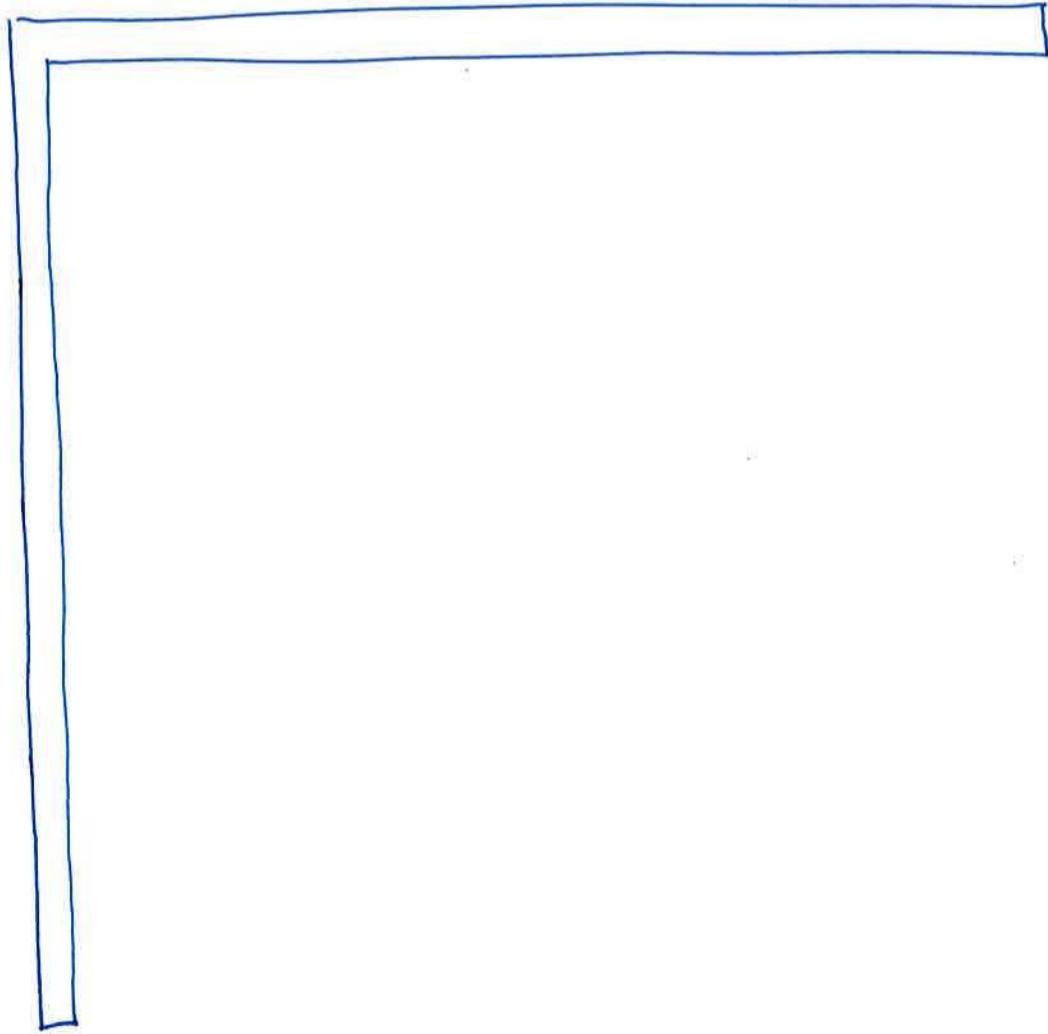


# **Step by Step Guide to Measuring for Kitchen Cabinets**

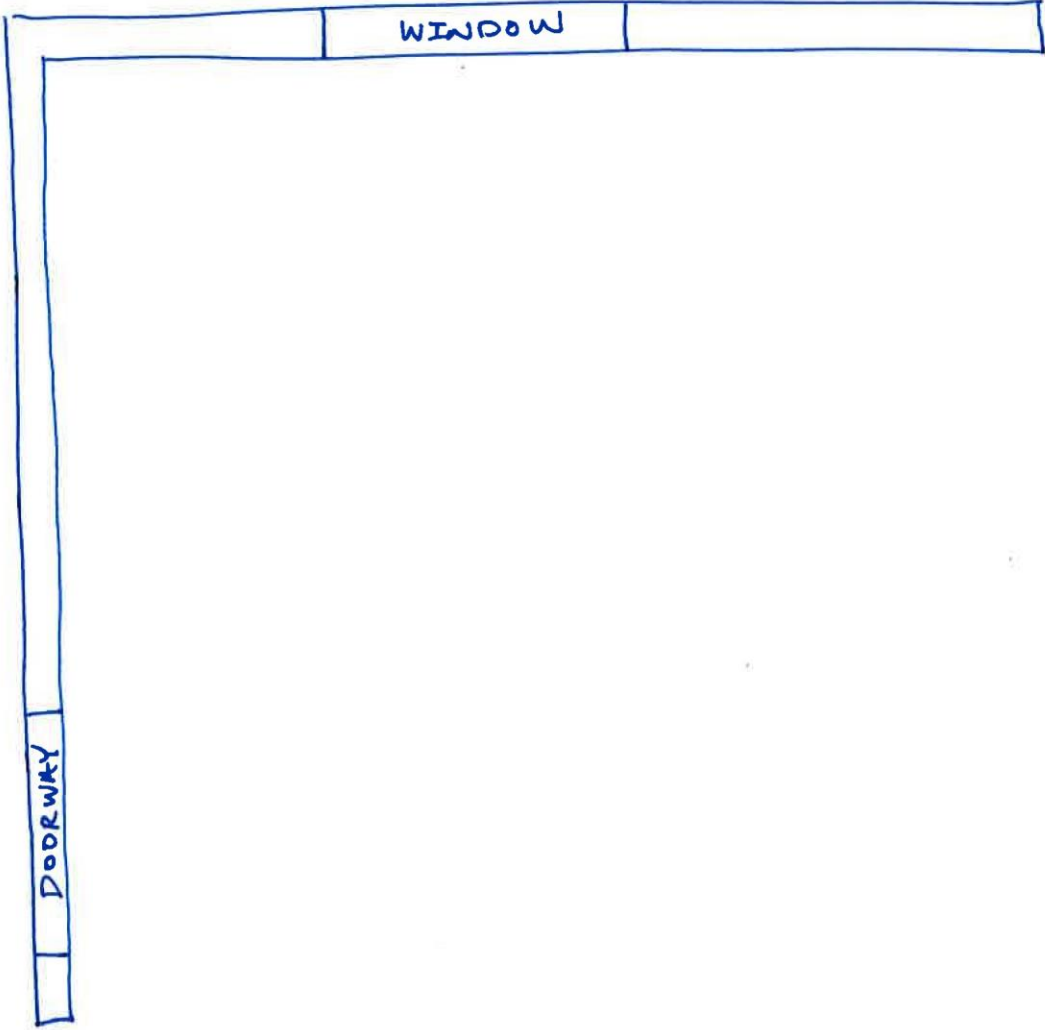
**Use this guide to draw a basic floorplan for your kitchen. Our designers can use your measurements to create an estimate and design options.**

**Make sure to take some pictures of your kitchen and bring them along or send them to us along with your floorplan drawing. Pictures are extremely helpful.**

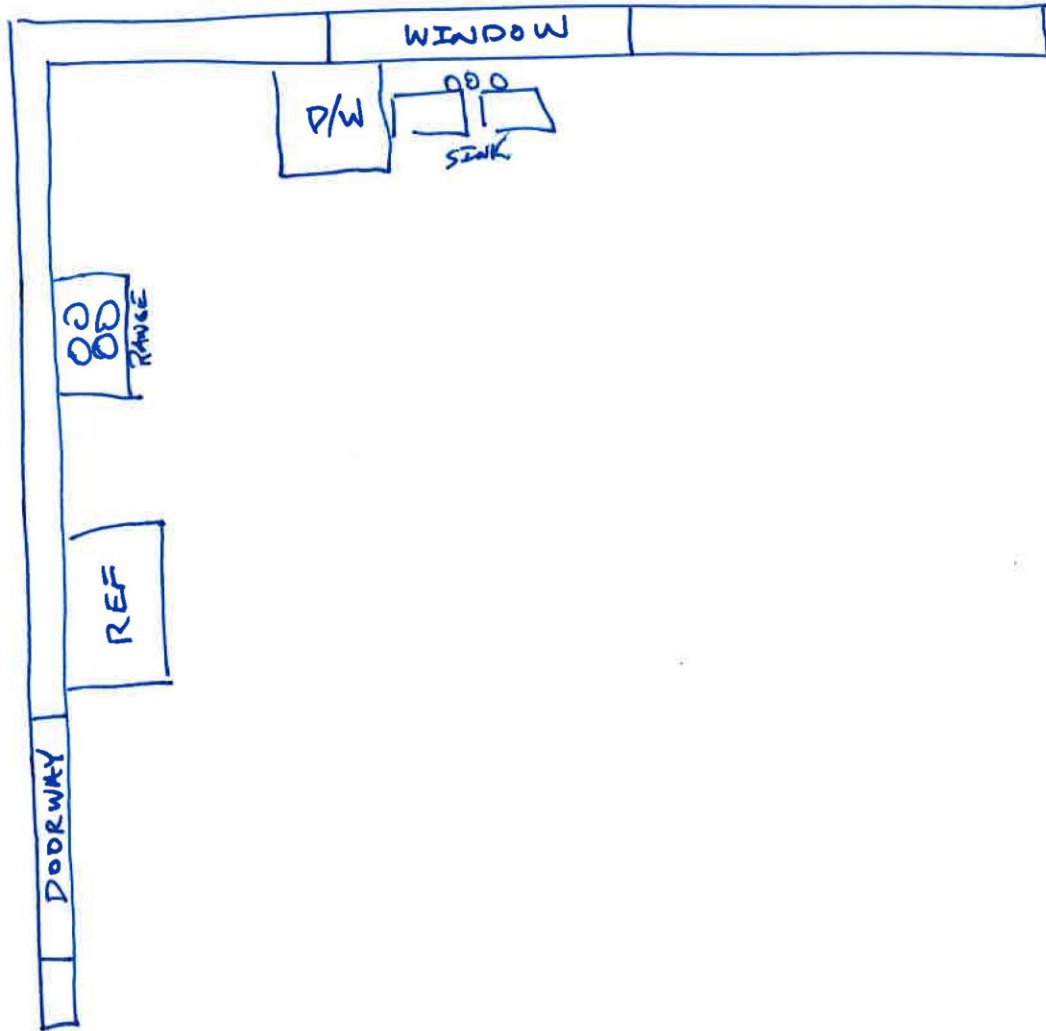
Step 1 - Start with a blank sheet of paper and sketch the walls of your kitchen.  
Hint: Imagine you are able the kitchen looking down. Sketch the walls as they appear from above.



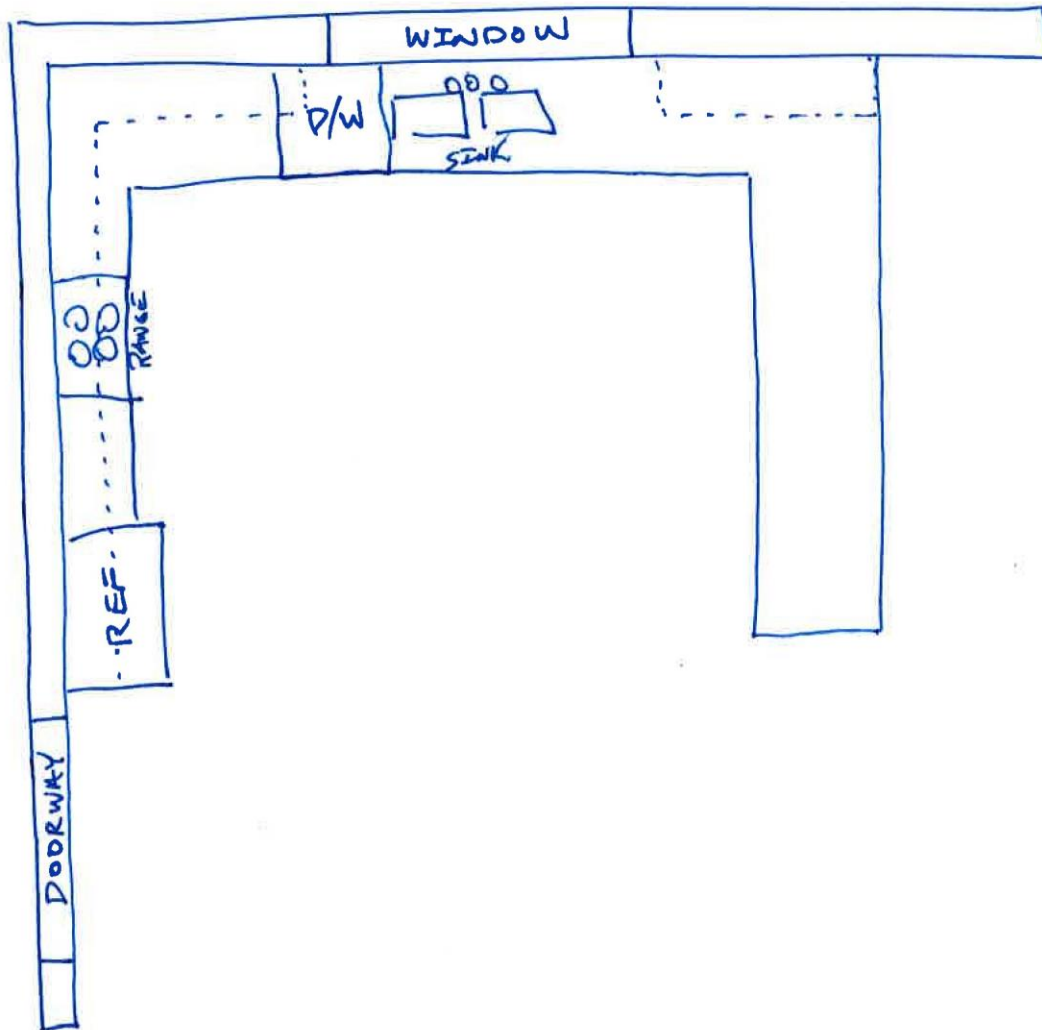
Step 2 – Mark and label any windows and doors in the walls.



Step 3 – Draw in the sink, stove/range, refrigerator, dishwasher, and any other appliances.

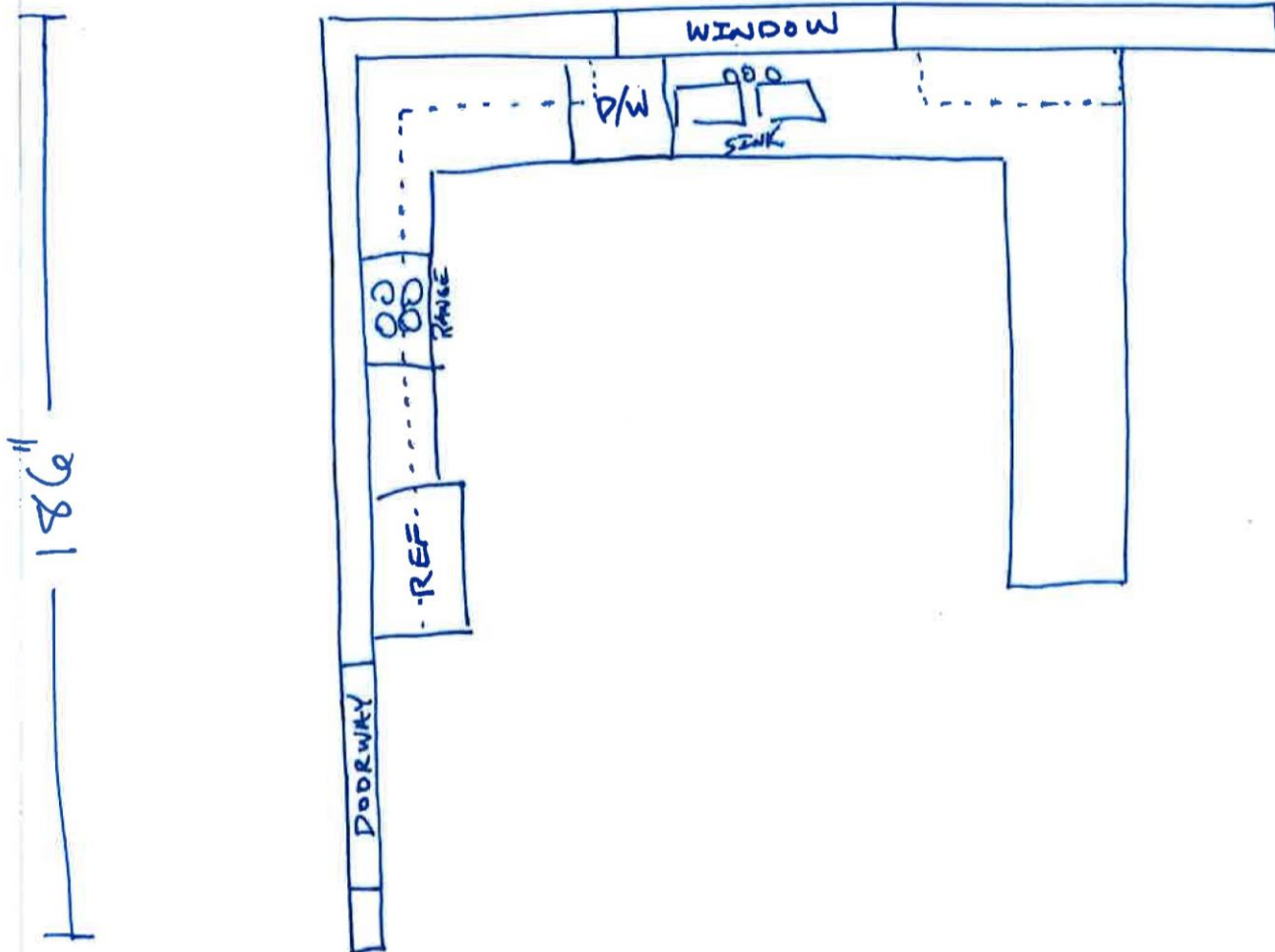


Step 4 – Sketch in the cabinets. *Hint: Use a solid deeper line to indicate base cabinets, and a shallow dotted line to indicate wall cabinets.*



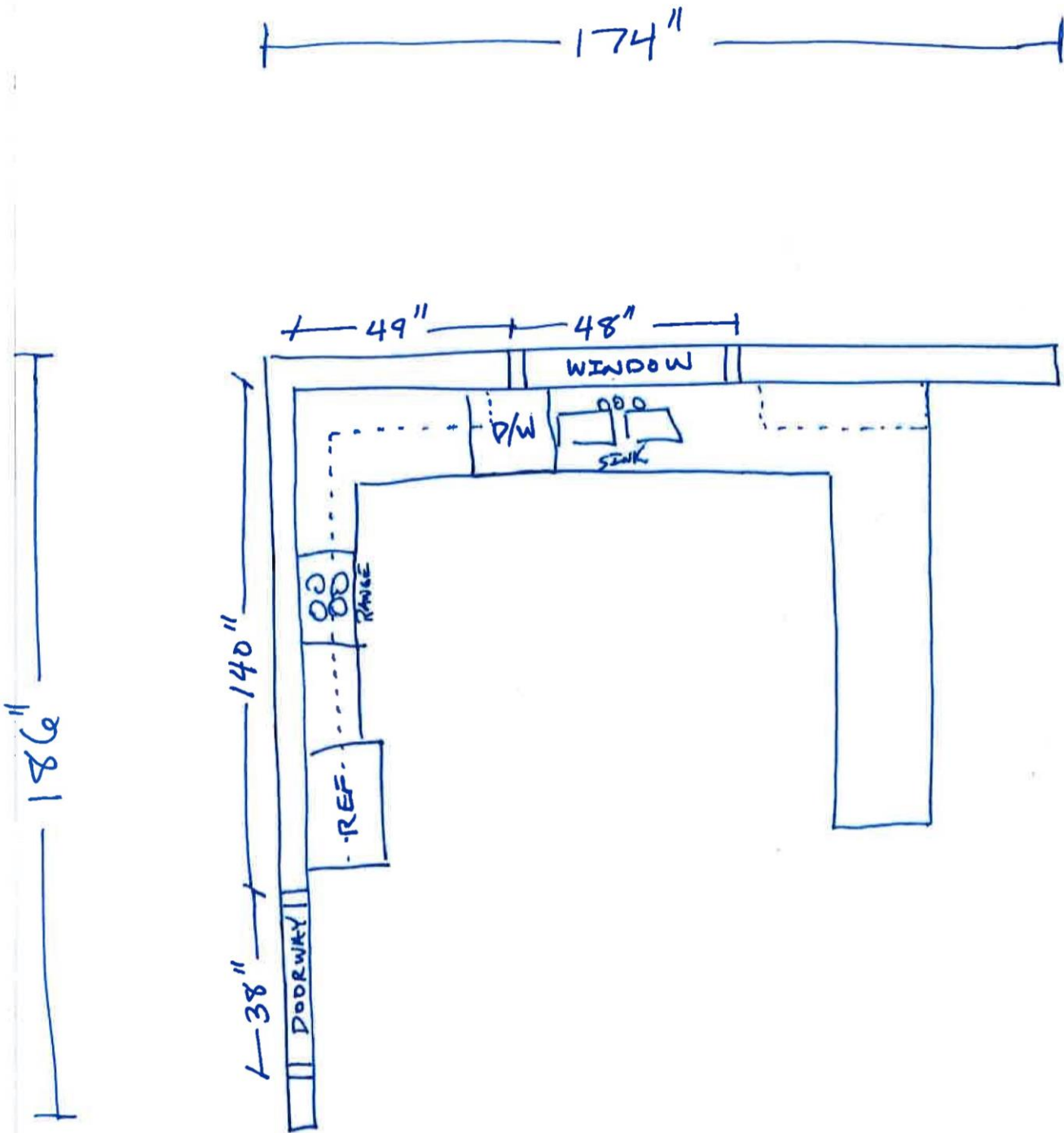
Step 5 – Measure the overall length of the walls and label the drawing accordingly. *Hint: Leave plenty of room for more measurements.*

174"

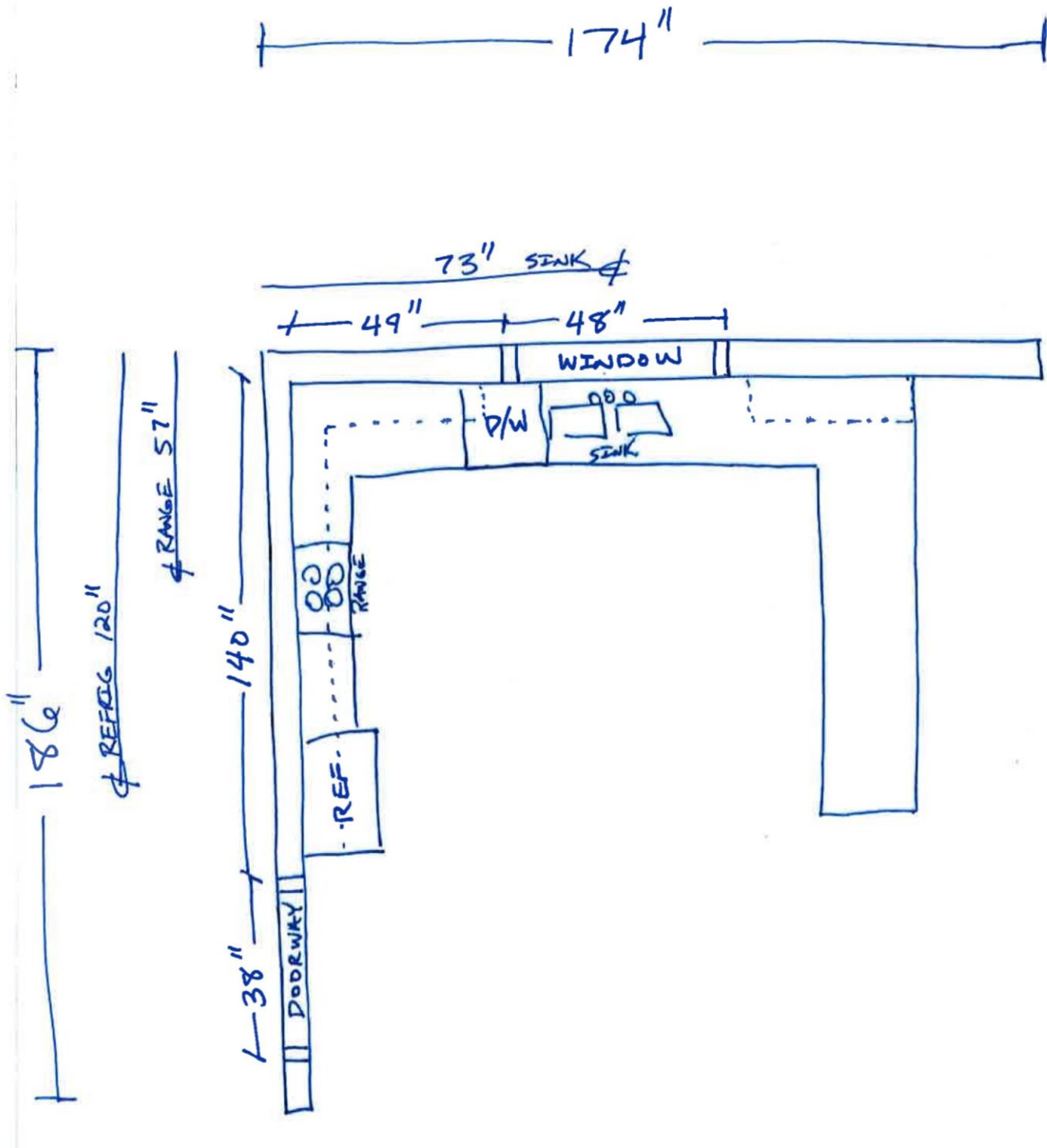


186"

Step 6 – Measure the overall width of each window and door including the trim and label accordingly. Then, starting from a wall corner (or the end of a wall), measure to the edge of each window and door and label.

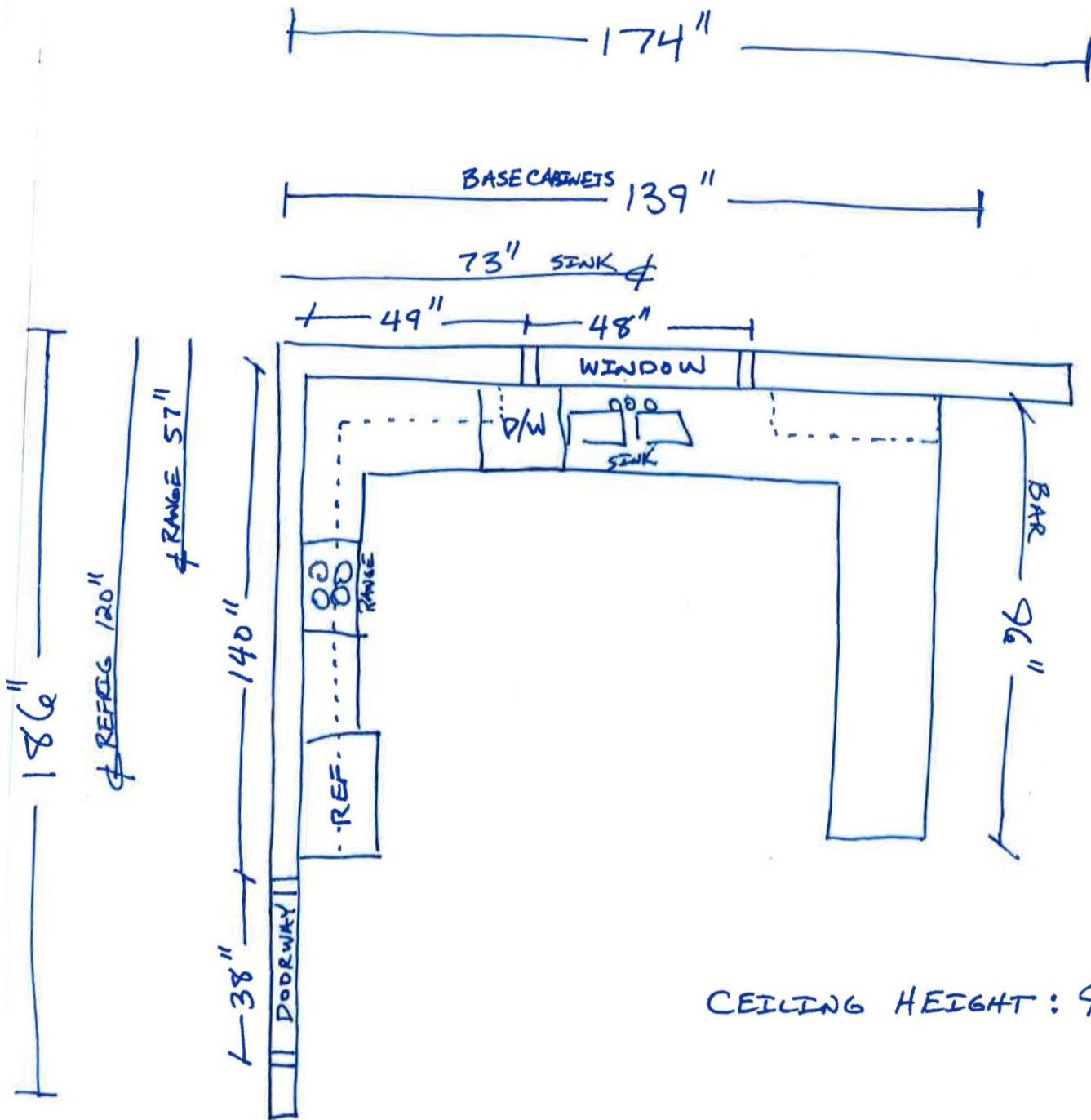


Step 7 – Starting from the corner (or the end of a wall if necessary) measure along the wall to the center of the sink and to the center of each appliance and label each center on your layout. *Hint: We usually do not need the dishwasher center.*





Step 8 – Measure the height of your ceiling from the finished floor and label your floorplan. Also, add any specific cabinet measurements that are not already included. *Congrats – You're all done.*



CEILING HEIGHT:  $94\frac{3}{4}$ "